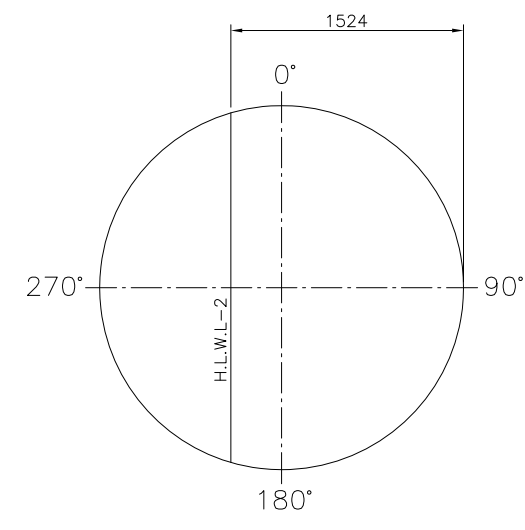
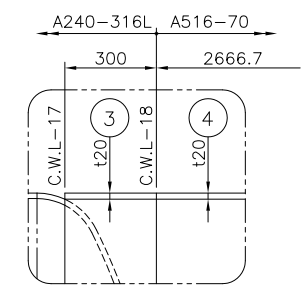


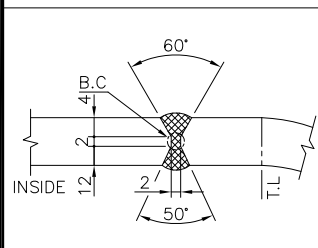
BODY SEAM PLAN (LOWER SIDE)



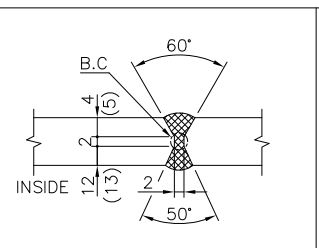
BTM. HEAD SEAM PLAN



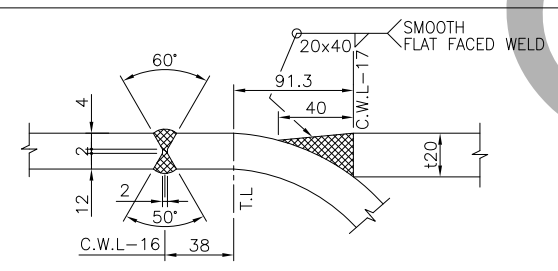
DETAIL OF "A"



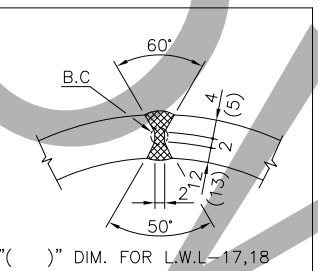
JOINT NO. C.W.L-16



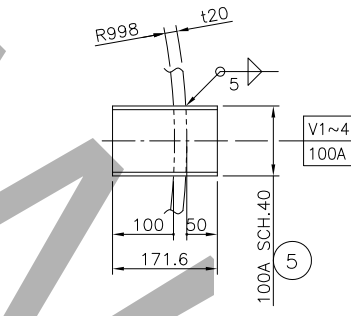
JOINT NO. C.W.L-15,18, H.L.W.L-2



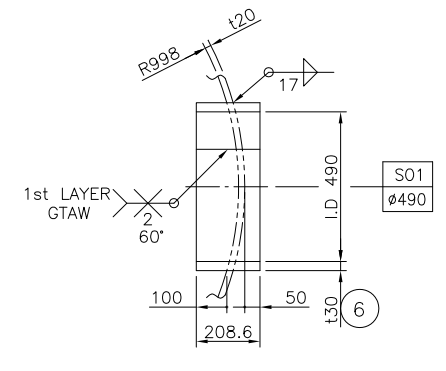
JOINT NO. C.W.L-16,17



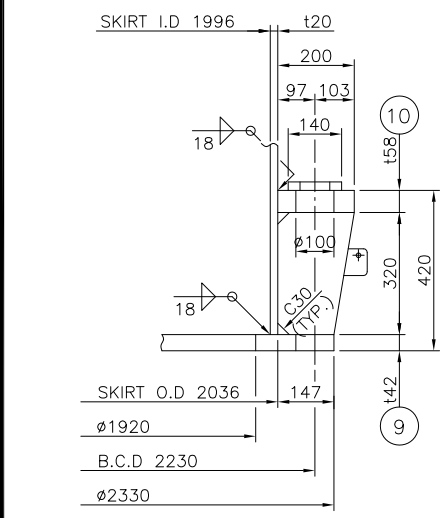
JOINT NO. L.W.L-17,18



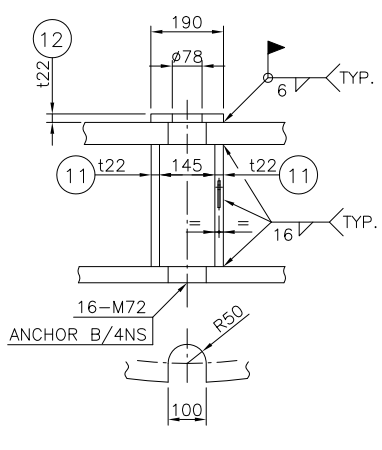
VENT OPENING



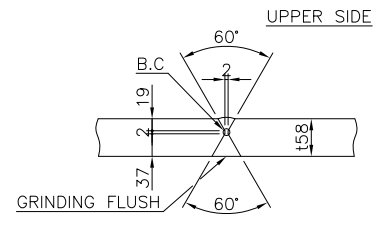
SLEEVE OPENING



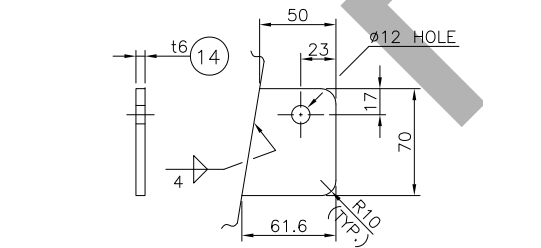
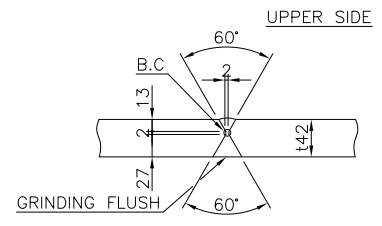
DETAIL OF BASE BLOCK



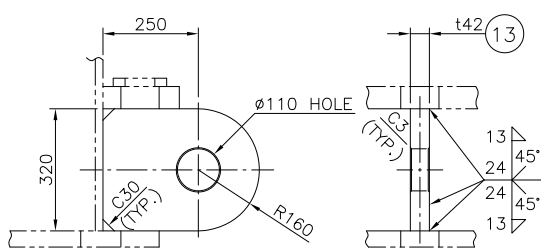
BASE RING JOINT



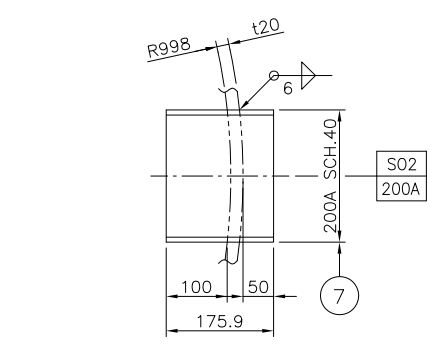
COMP. RING JOINT



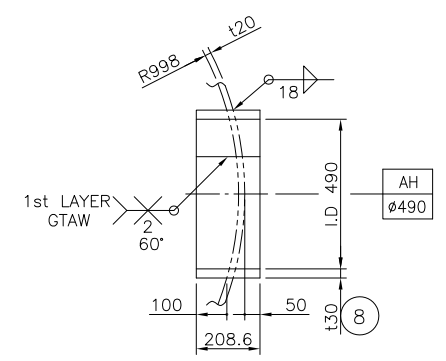
EARTH LUG (AT:33.75°, 213.75°)



TAILING LUG



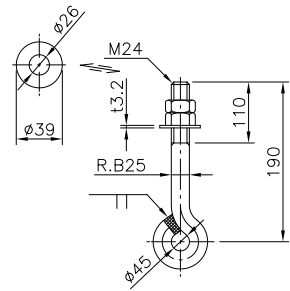
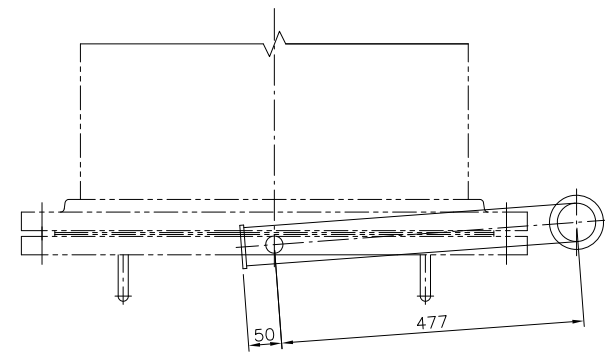
SLEEVE OPENING



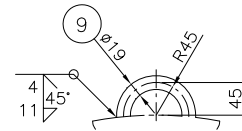
ACCESS OPENING

PART NO.	PART NAME	MATERIAL	DIMENSIONS	INSTALL. QTY PER 1 SET	SPARE QTY PER 1 SET	REMARK
14	EARTH LUG	304 S.S	t6	2		
13	TAILING LUG	A283-C	t42	1		
12	WASHER PLATE	A283-C	t22	16	2	
11	GUSSET PLATE	A283-C	t22	32		
10	COMP.RING	A283-C	t58	1		
9	BASE RING	A283-C	t42	1		
8	ACCESS OPENING	A283-C	t30	1		
7	SLEEVE OPENING	A53-B	200A SCH.40	1		
6	SLEEVE OPENING	A283-C	t30	1		
5	VENT OPENING	A53-B	100A SCH.40	4		
4	LOWER SKIRT	A516-70	t20	1		
3	UPPER SKIRT	A240-316L	t20	1		
2	BTM. HEAD	A240-316L	t18	1		10% DISH
1	SHELL	A240-316L	t18	1		

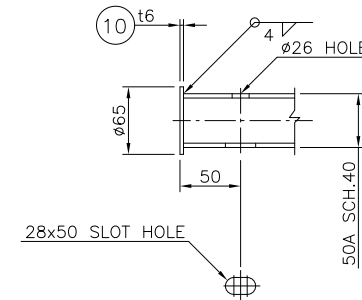
PART LIST [ 1 SET(S) TO BE MANUFACTURED ]



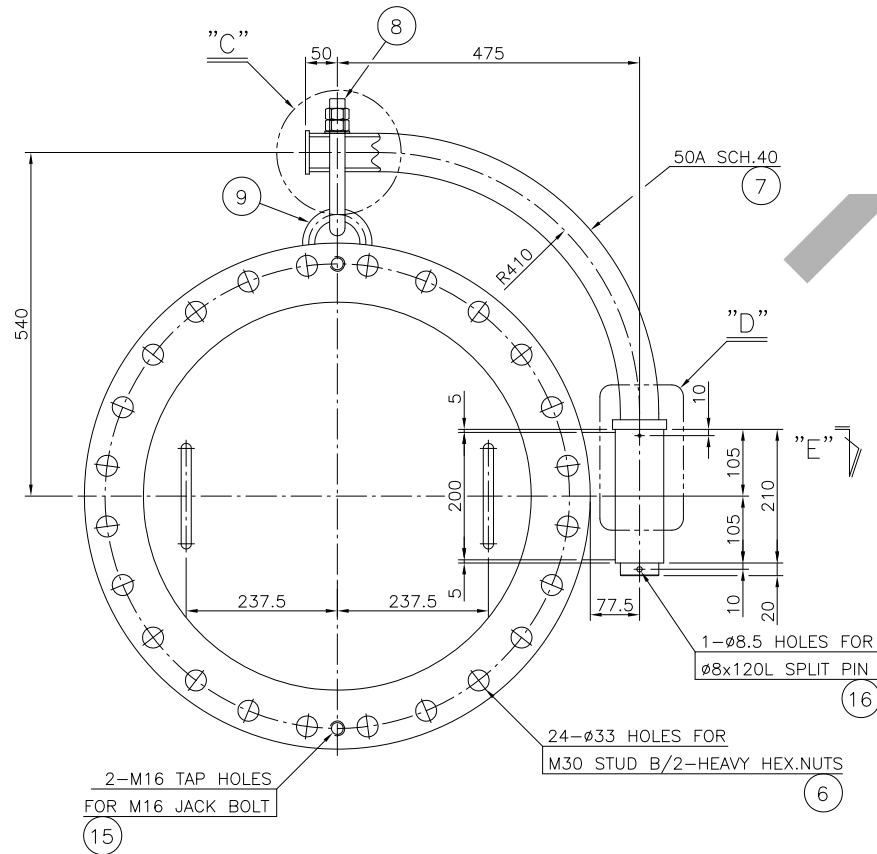
EYE B/2N/W (8)



HOOK

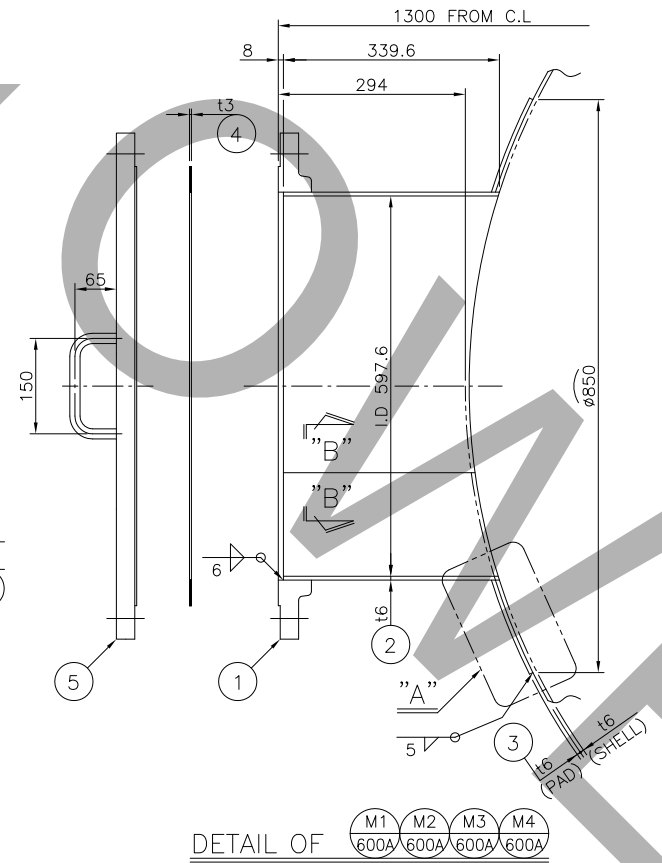


DETAIL OF "C"

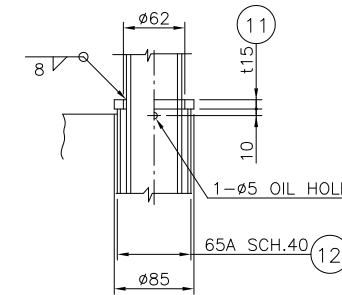


DAVIT

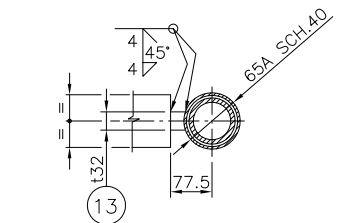
(SEE ASSEMBLY DWG. FOR OPENING DIRECTION ORIENTATION)



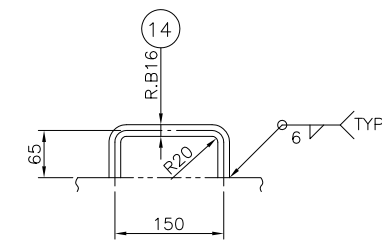
DETAIL OF (M1 600A, M2 600A, M3 600A, M4 600A)



DETAIL OF "D"



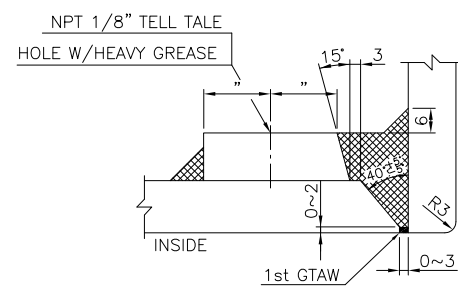
SECTION "E"



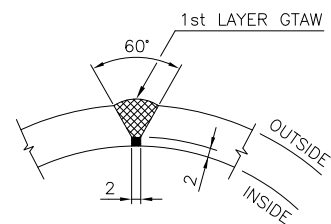
HANDLE

PART NO.	PART NAME	MATERIAL	DIMENSIONS	QTY PER 1 SET	SPARE	REMARK
16	SPLIT PIN	304 S.S	Ø8x120L	4		
15	JACK BOLT	316L S.S	M16x60L	8		
14	HANDLE	316L S.S	R.B16	8		
13	SUPPORT	316L S.S	t32	4		
12	SLEEVE PIPE	STS304TP	65A SCH.40	4		
11	COLLAR	304 S.S	t15	4		
10	END PLATE	304 S.S	t6	4		
9	HOOK	316L S.S	Ø19	4		
8	EYE B/2N/W	304 S.S	M24x190L	4		
7	DAVIT PIPE	STS304TP	50A SCH.40	4		
6	STUD BOLT/ 2-HEAVY HEX.NUTS	A193-B8M/A194-8M	M30x140L	96	8	
5	BLIND FLANGE	STSF316L	600A KS10K BL,RF	4		
4	GASKET	V-7010EX	t3 (FOR 600A RF)	4	4	
3	REINF.PAD	A240-316L	t6	4		
2	NECK PLATE	A240-316L	t6	4		
1	FLANGE	STSF316L	600A KS10K SO,RF	4		

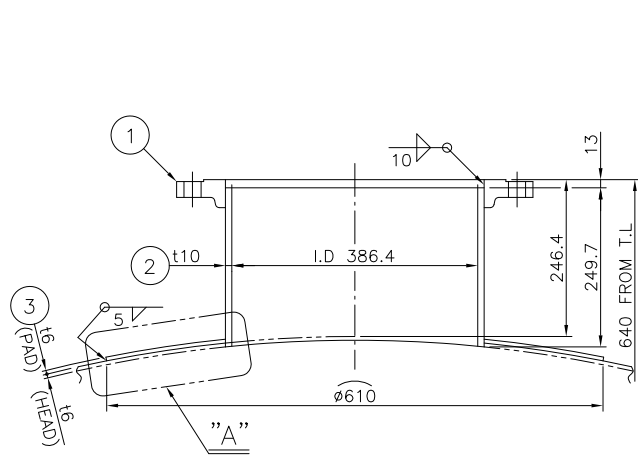
PART LIST [ 4 SET(S) TO BE MANUFACTURED ]



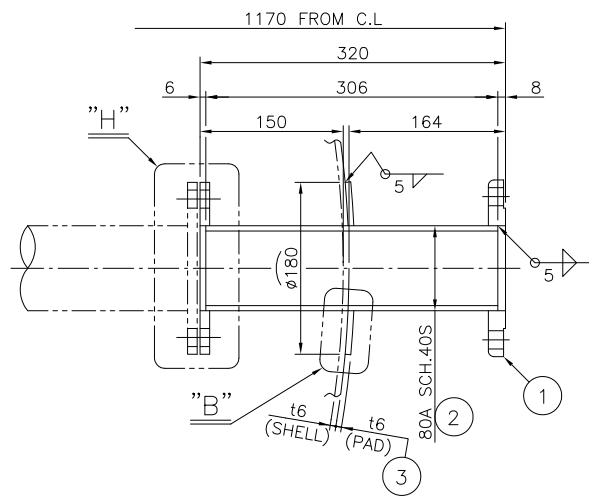
DETAIL OF "A"



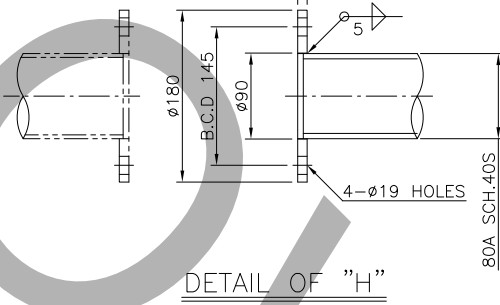
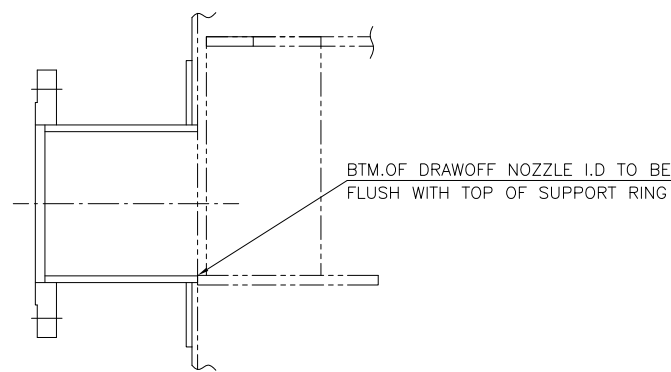
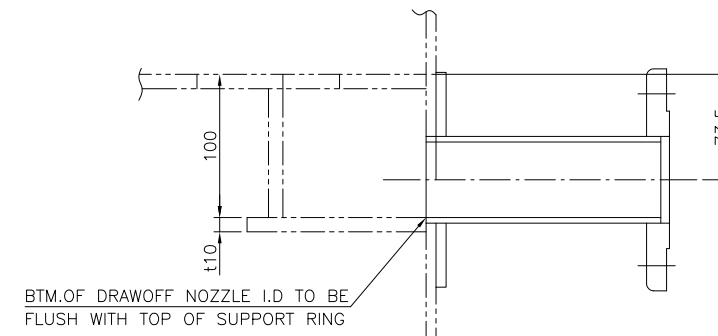
SECTION "B"- "B"



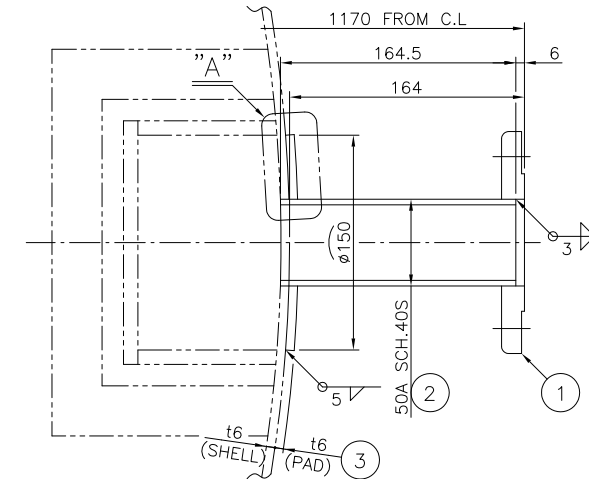
DETAIL OF A1 400A



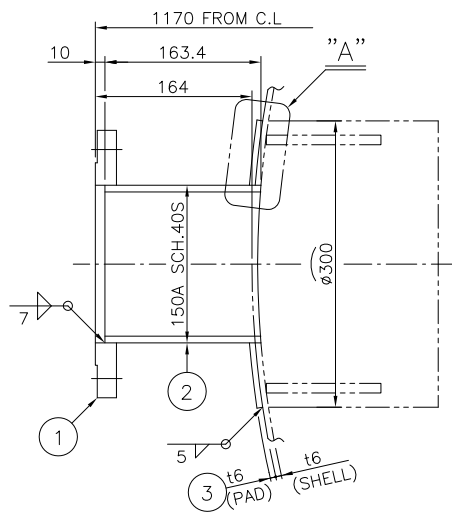
DETAIL OF A2 80A



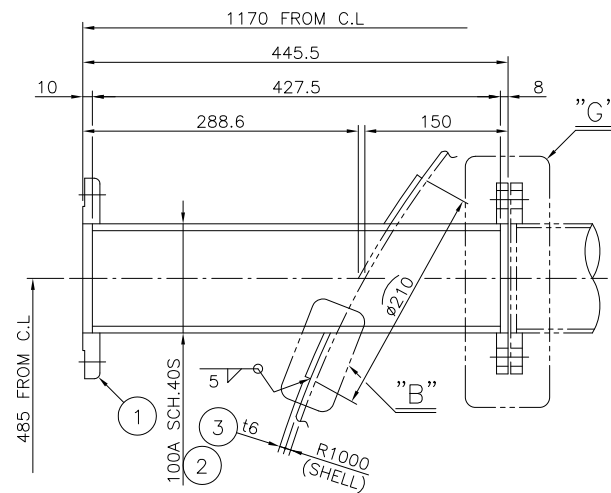
DETAIL OF "H"



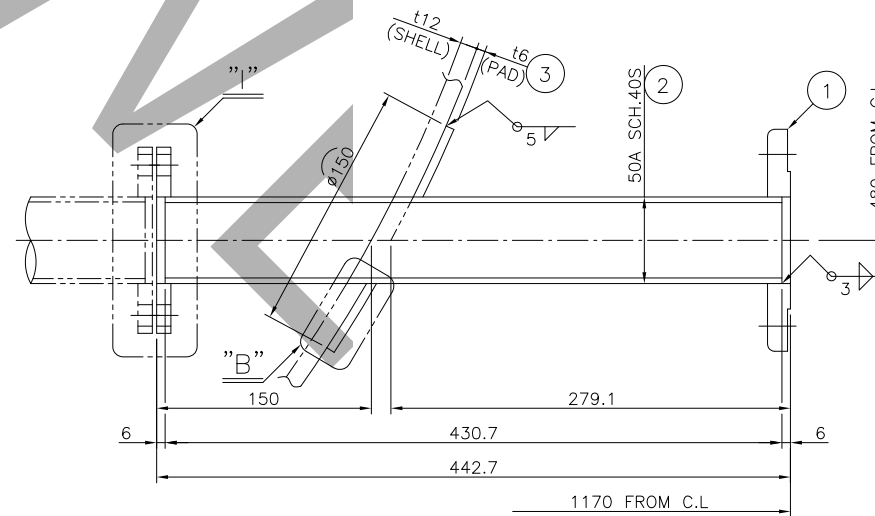
DETAIL OF A6 50A



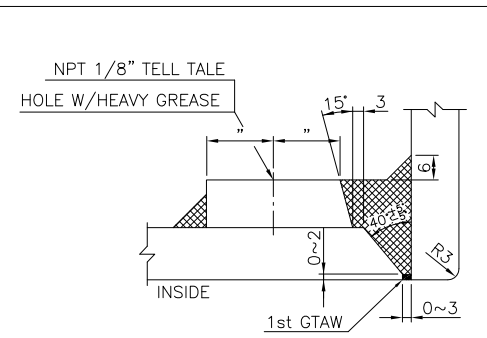
DETAIL OF A3 150A



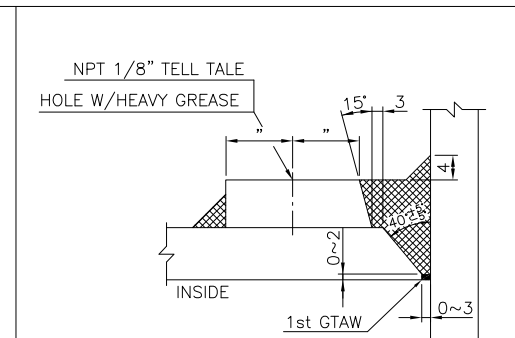
DETAIL OF A4 100A A5 100A



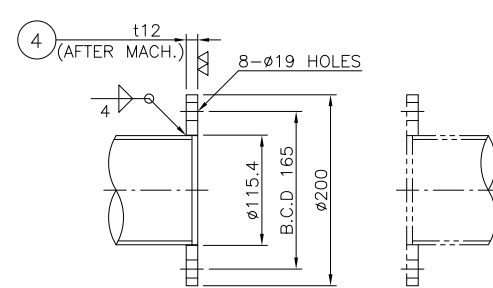
DETAIL OF A7 50A



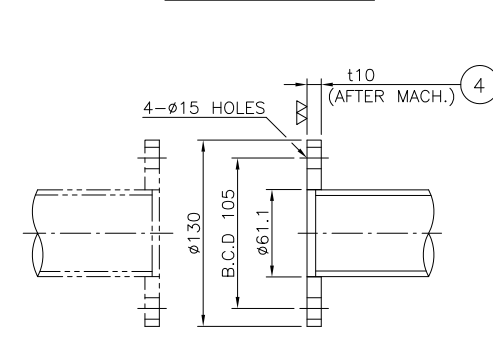
DETAIL OF "A"



DETAIL OF "B"



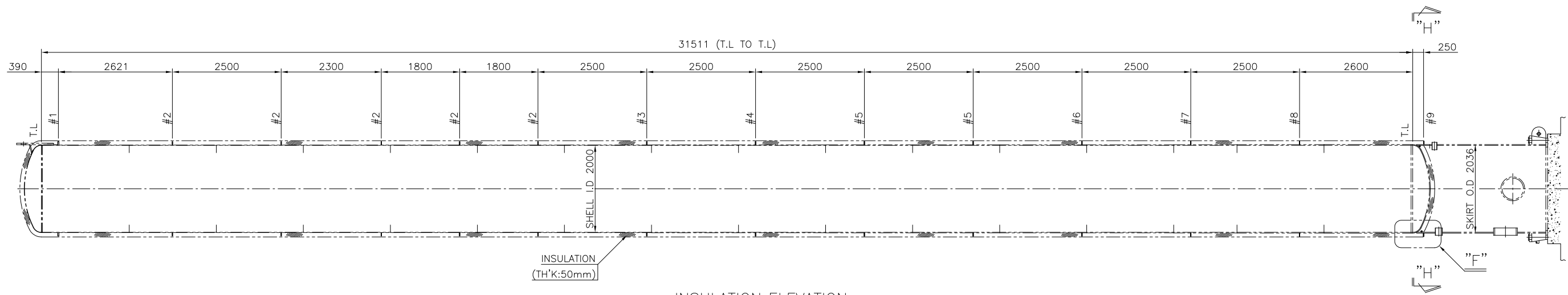
DETAIL OF "G"



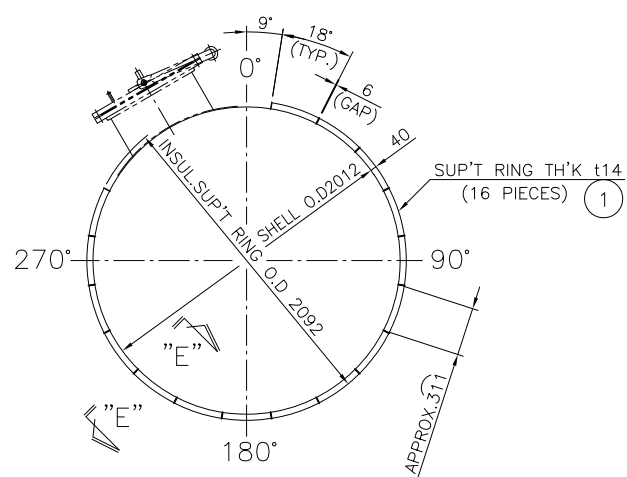
DETAIL OF "I"

PART NO.	PART NAME	MATERIAL	DIMENSIONS	QTY PER 1 SET	REMARK
A7	4 PLATE FLANGE	A240-316L	t10	1	
	3 REINF.PAD	A240-316L	t6	1	
	2 NOZZLE NECK	STS316LTP	50A SCH.40S	1	
	1 NOZZLE FLANGE	STSF316L	50A KS10K SO,RF	1	
A6	3 REINF.PAD	A240-316L	t6	1	
	2 NOZZLE NECK	STS316LTP	50A SCH.40S	1	
	1 NOZZLE FLANGE	STSF316L	50A KS10K SO,RF	1	
A5 A4	4 PLATE FLANGE	A240-316L	t12	2	
	3 REINF.PAD	A240-316L	t6	2	
	2 NOZZLE NECK	STS316LTP	100A SCH.40S	2	
	1 NOZZLE FLANGE	STSF316L	100A KS10K SO,RF	2	
A3	3 REINF.PAD	A240-316L	t6	1	
	2 NOZZLE NECK	STS316LTP	150A SCH.40S	1	
	1 NOZZLE FLANGE	STSF316L	150A KS10K SO,RF	1	
A2	4 PLATE FLANGE	A240-316L	t10	1	
	3 REINF.PAD	A240-316L	t6	1	
	2 NOZZLE NECK	STS316LTP	80A SCH.40S	1	
	1 NOZZLE FLANGE	STSF316L	80A KS10K SO,RF	1	
A1	3 REINF.PAD	A240-316L	t6	1	
	2 NOZZLE NECK	A240-316L	t10	1	
	1 NOZZLE FLANGE	STSF316L	400A KS10K SO,RF	1	

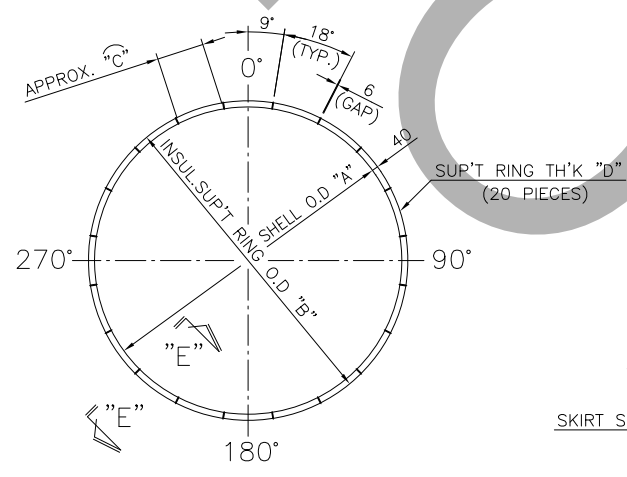
PART LIST [ 1 SET(S) TO BE MANUFACTURED ]



INSULATION ELEVATION



INSULATION SUP'T RING FOR #1



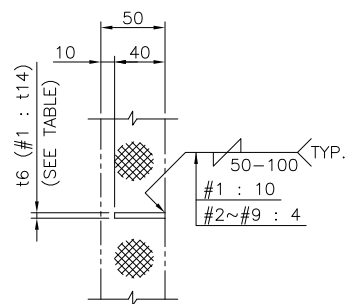
INSULATION SUP'T RING FOR #2~#9

	"A" (SHELL O.D)	"B" (INSUL.SUP'T RING O.D)	"C" (LENGTH)	"D" (RING THICKNESS)	Q'TY	NO.
#2	∅2012	∅2092	311	t6	20	2
#3	∅2016	∅2096	311	t6	20	3
#4	∅2020	∅2100	312	t6	20	4
#5	∅2024	∅2104	312	t6	20	5
#6	∅2025.4	∅2105.4	313	t6	20	6
#7	∅2028	∅2108	313	t6	20	7
#8	∅2032	∅2112	313	t6	20	8
#9	∅2036	∅2116	314	t6	20	9

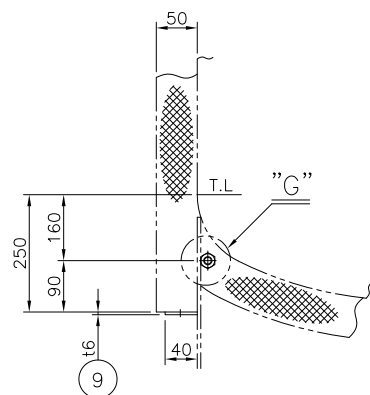
DIMENSION TABLE

PART NO.	PART NAME	MATERIAL	DIMENSIONS	INSTALL Q'TY PER 1 SET	SPARE Q'TY PER 1 SET	REMARK
10	NUT	304 S.S	A194-8M	20		
9	INSUL. SUP'T CLIP	A283-C	t6	20		
8	INSUL. SUP'T CLIP	A240-316L	t6	20		
7	INSUL. SUP'T CLIP	A240-316L	t6	20		
6	INSUL. SUP'T CLIP	A240-316L	t6	20		
5	INSUL. SUP'T CLIP	A240-316L	t6	20		
4	INSUL. SUP'T CLIP	A240-316L	t6	20		
3	INSUL. SUP'T CLIP	A240-316L	t6	20		
2	INSUL. SUP'T CLIP	A240-316L	t6	20		
1	INSUL. SUP'T CLIP	A240-316L	t14	16		

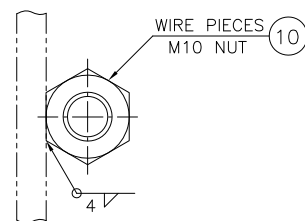
PART LIST [ 1 SET(S) TO BE MANUFACTURED ]



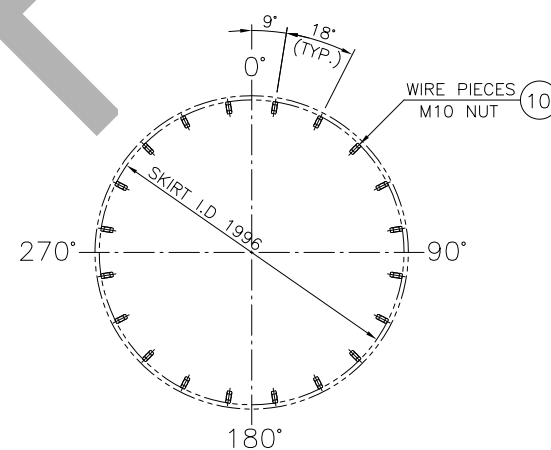
SECTION "E"-"E"



DETAIL OF "F"



DETAIL OF "G"



SECTION "H"-"H"