

GENERAL NOTES

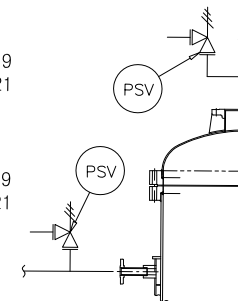
- GASKET MATERIAL : PTFE SHEET GASKET (t3)
- SPARE PARTS : ERECTION & COMMISSIONING
- GASKET : 200%, BOLT&NUT : 10% (MIN.2 SETS)
- PACKING TYPE : PALLRING 1/2"
- PACKING MATERIALS : 316 / 316L S.S

*** 동체 안전변**

- 전량식 25A
- 목부지름(dt) : 19
- 모델명 : JSV-FF21

*** 자켓 안전변**

- 전량식 25A
- 목부지름(dt) : 19
- 모델명 : JSV-FF21



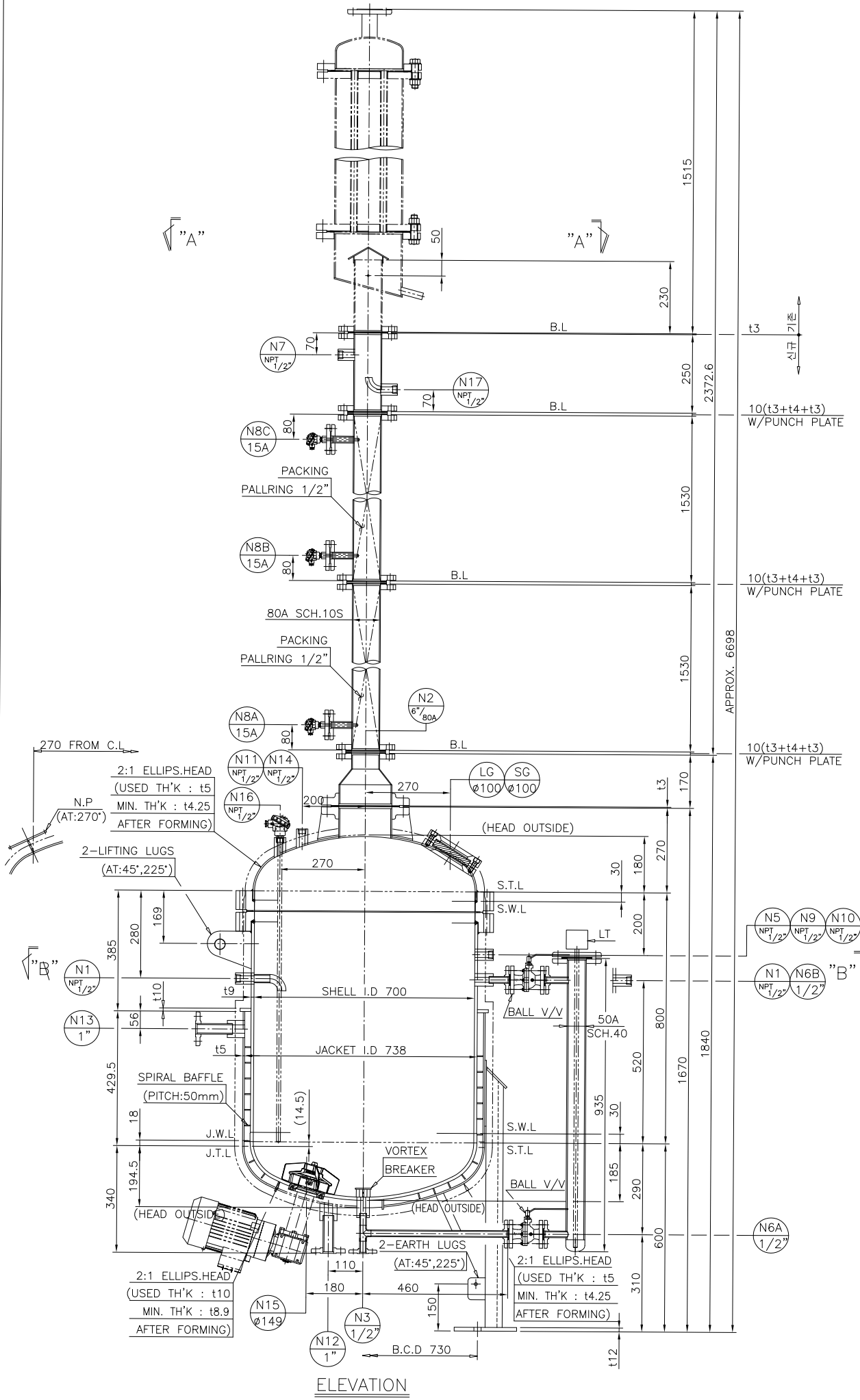
SHELL&JACKET PSV

DESIGN DATA			
GOVERNMENT APP'L	<input checked="" type="checkbox"/> 산업안전보건법 (INDUSTRIAL SAFETY AND HEALTH ACT / KOSHA) <input type="checkbox"/> 고압가스안전관리법 (KOREA HIGH-PRESSURE SAFETY CONTROL LAW / KGS) <input type="checkbox"/> 에너지 이용관리법 (RATIONAL ENERGY UTILIZATION ACT / KEMCO) <input type="checkbox"/> 해양안전법 (NONE)		
CODE	ASME SEC.VIII DIV.1-2013 ED.	TYPE	
VOLUME (m ³)	0.43	NO. OF REQ'D	
LIQUID NAME	SHELL	JACKET	
PRESSURE (kg/cm ² .G (MPa))	DESIGN		INSULATION (MM)
	OPER.		SPECIFIC GRAVITY
TEMP. (°C)	DESIGN		ERECTION
	OPER.		EMPTY
TEST PRESSURE (kg/cm ² .G (MPa))	HYDRO.		WEIGHT (kg)
	PNEUM.		OPER.
CORR. ALLOW. (mm)			TEST
RADIOGRAPHIC (S/H)			
JOINT EFF. (%) (S/H)			
P.W.H.T / S.R			
M.D.M.T °C			
WIND VELOCITY (M/SEC.)			
EARTHQUAKE FACTOR			

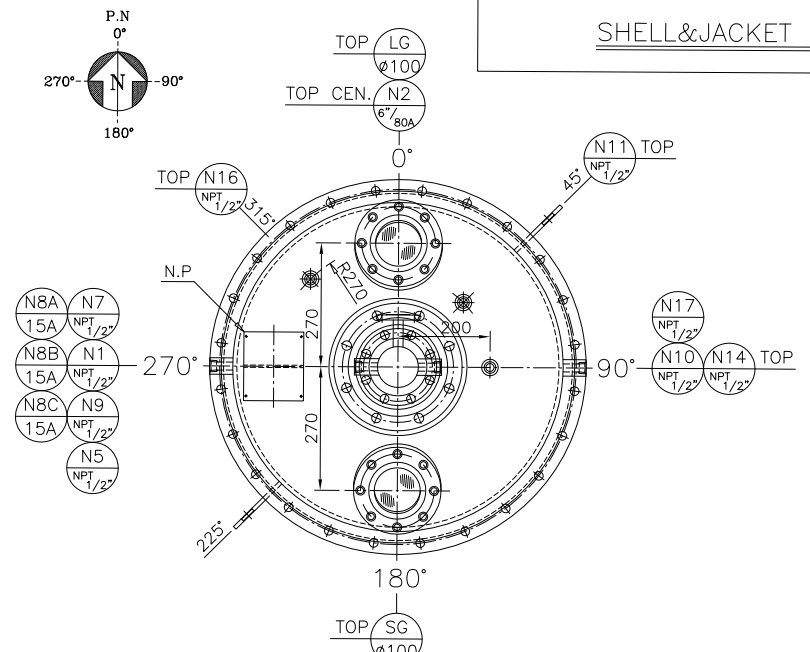
NOZZLE LIST							
NOZZLE MARK	QTY	NOMI. SIZE	SCH. NO.	FLANGE RATING	SERVICE	REMARK	NATURAL C.I. PROJECTION
N1	1	NPT1/2"	-	ASME 3000#	FEED INLET		SEE DWG.
N2	1	6"/80A ^{10S/10S}	-	ASME 150# SO,R	VAPOR OUTLET		SEE DWG.
N3	1	1/2"	40S	ASME 150# SO,R	LIQUID OUTLET		SEE DWG.
N5	1	1/2"	40S	ASME 3000#	TT		SEE DWG.
N6A,B	2	1/2"	40S	ASME 150# SO,R	LT/LG		SEE DWG.
N7	1	NPT1/2"	-	ASME 3000#	PT		SEE DWG.
N8A~C	3	NPT1/2"	-	ASME 3000#	TI(NBC)/TI(N8A,N8B)		SEE DWG.
N9	3	NPT1/2"	-	ASME 3000#	PT		SEE DWG.
N10	1	NPT1/2"	-	ASME 3000#	SPARE		SEE DWG.
N11	1	NPT1/2"	-	ASME 3000#	CONDENSER		SEE DWG.
N12	1	1"	40S	ASME 150# SO,R	HOT OIL INLET		SEE DWG.
N13	1	1"	40S	ASME 150# SO,R	HOT OIL OUTLET		SEE DWG.
N14	1	NPT1/2"	-	ASME 3000#	REFLUX BYPASS		SEE DWG.
N15	1	ø149	-	ASME 3000#	MIXER DRIVE		SEE DWG.
N16	1	NPT1/2"	-	ASME 3000#	TI		SEE DWG.
N17	1	NPT1/2"	-	ASME 3000#	REFLUX BYPASS		SEE DWG.

- GENERAL NOTES**
- ALL DIMENSIONS ARE IN mm UNLESS OTHERWISE NOTED.
(모든 치수는 별도로 설명이 없는 한 mm 단위로 함.)
 - ALL BOLT HOLES ARE TO STRADDLE THE NORTH/SOUTH AND VERTICAL CENTER LINES.
(모든 볼트 구멍들은 북쪽과 남쪽 또는 그리고 기기의 CENTER LINE 에서 양분되어야 한다.)
 - NOZZLE PROJECTIONS ARE FROM CENTER LINE OF VESSEL OR NEAREST TANGENT LINE TO GASKET CONTACT SURFACE OF FLANGE.
(노즐 돌출부들은 VESSEL의 중심선 또는 탭 탭 라인에서 플랜지의 가스켓 접촉면 까지임.)
 - ALL WELDS TO BE CONTINUOUS EXCEPT NOTED.
(모든 용접들은 별도의 설명이 없는 한 연속용접 되어야 한다.)
 - GASKET CONTACT SURFACES OF FLANGE : 125 ~ 250 AARH.
(FLANGE의 GASKET 접촉면은 125 ~ 250 AARH로 가공됨.)

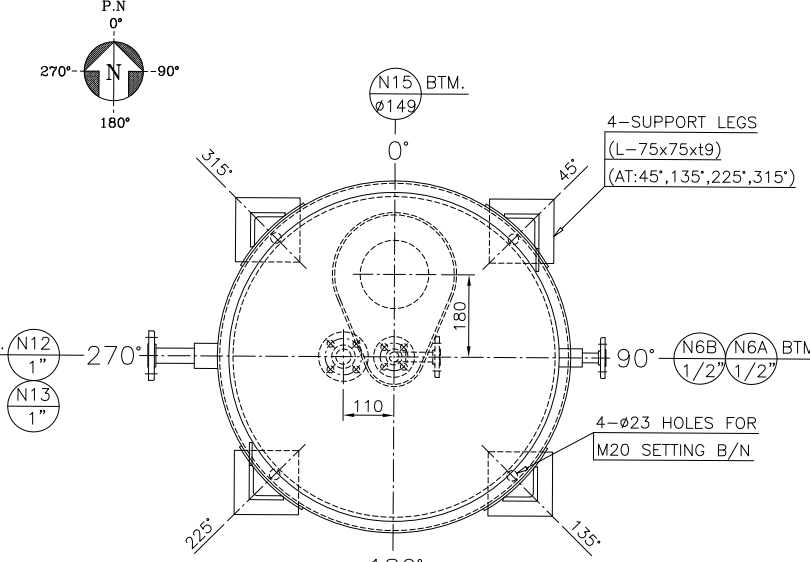
MATERIAL SPECIFICATION			
SHELL/JACKET	A240-316L/A240-304	HEAD/JACKET HEAD	A240-316L/A240-304
LEG/PAD	304 S.S./A240-316L	LIFTING LUG/PAD	304 S.S.
GIRTH FLANGE	-	ELIMINATOR	-
		VORTEX BREAKER	A240-316L
FITTING	A403-WP316L	FITTING	A403-WP316L
FLANGE	A182-F316L	FLANGE	-
NOZZLE NECK	A312-TP316L	PIPE	A312-TP316L
CLIP & SUPPORT	-	CLIP & SUPPORT	-
BOLT/NUT	A193-B7/A194-2H	BOLT/NUT	-
GASKET	SEE NOTE "6"	GASKET	-
		REINF. PAD	A240-316L
		MANHOLE COVER	
		MANHOLE NECK	
		NAME PLATE/BACKET	304 S.S./A240-316L
		EARTH LUGS	304 S.S.
		INTERNAL LADDER RUNG	



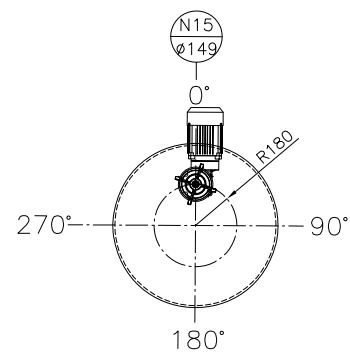
ELEVATION



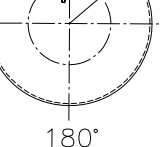
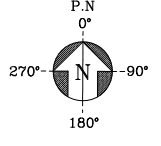
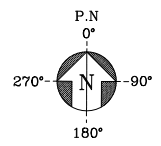
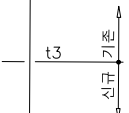
SECTION "A"- "A"

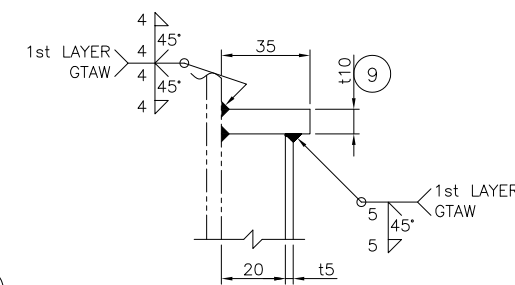
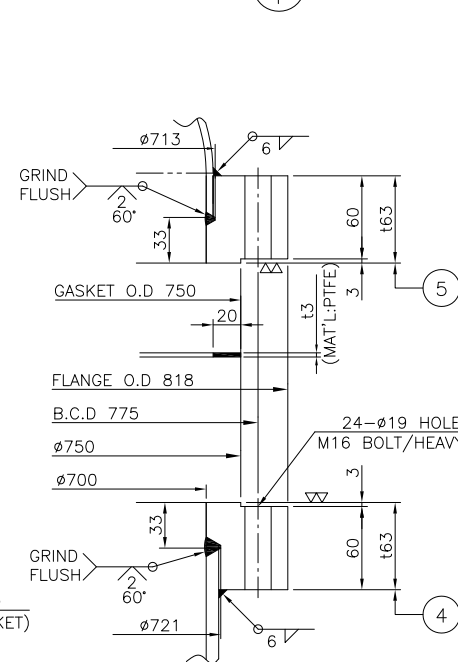
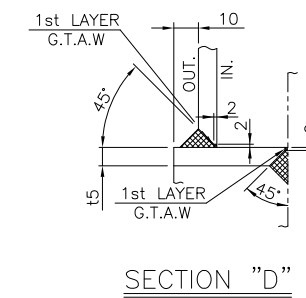
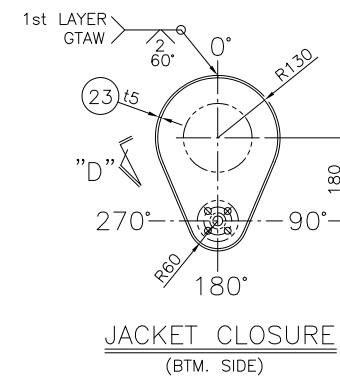
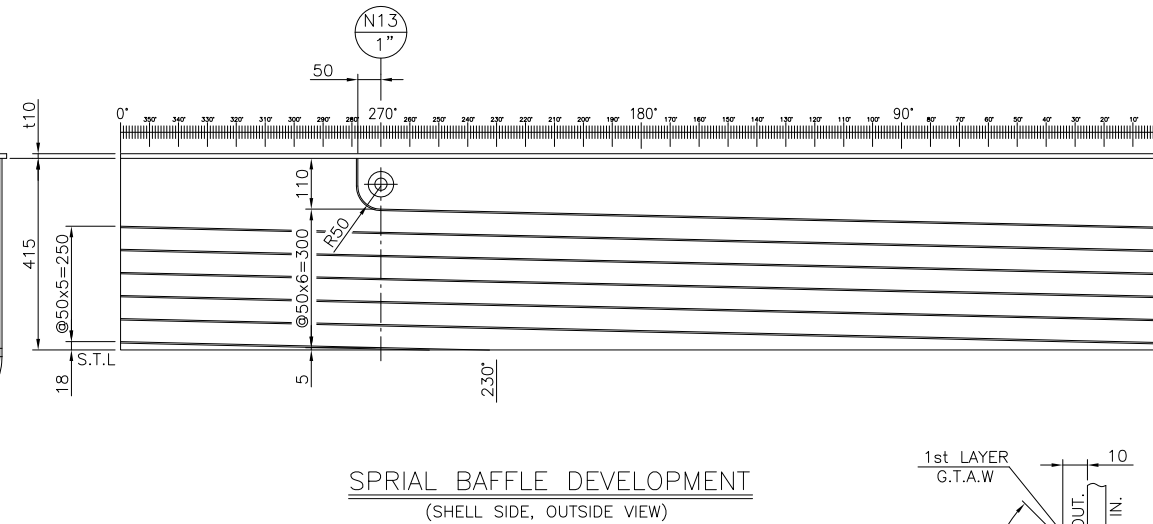
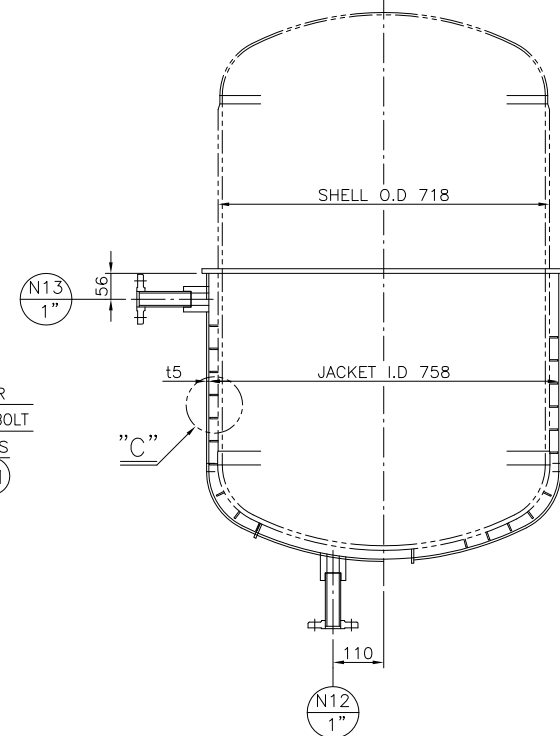
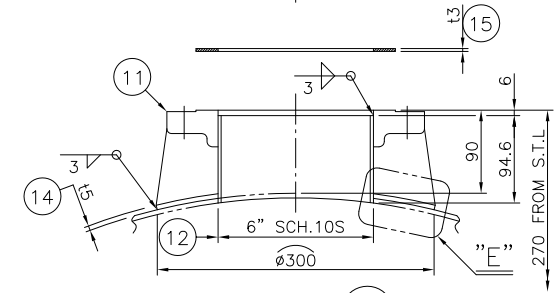
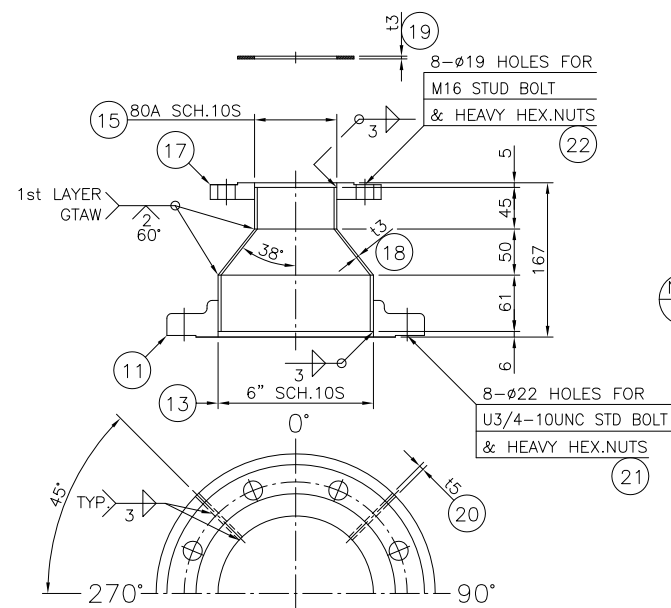


SECTION "B"- "B"

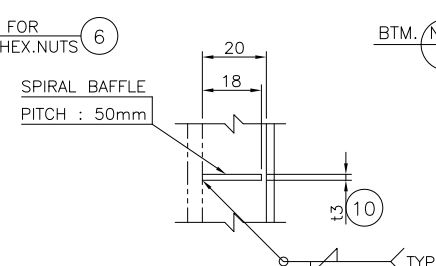


MIXER DIRECTION

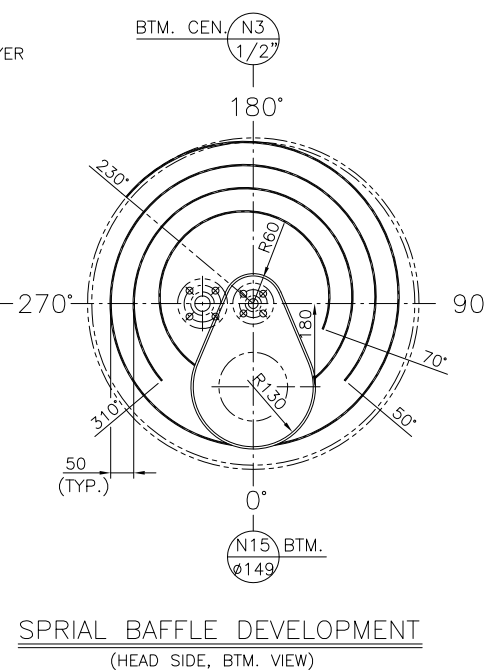




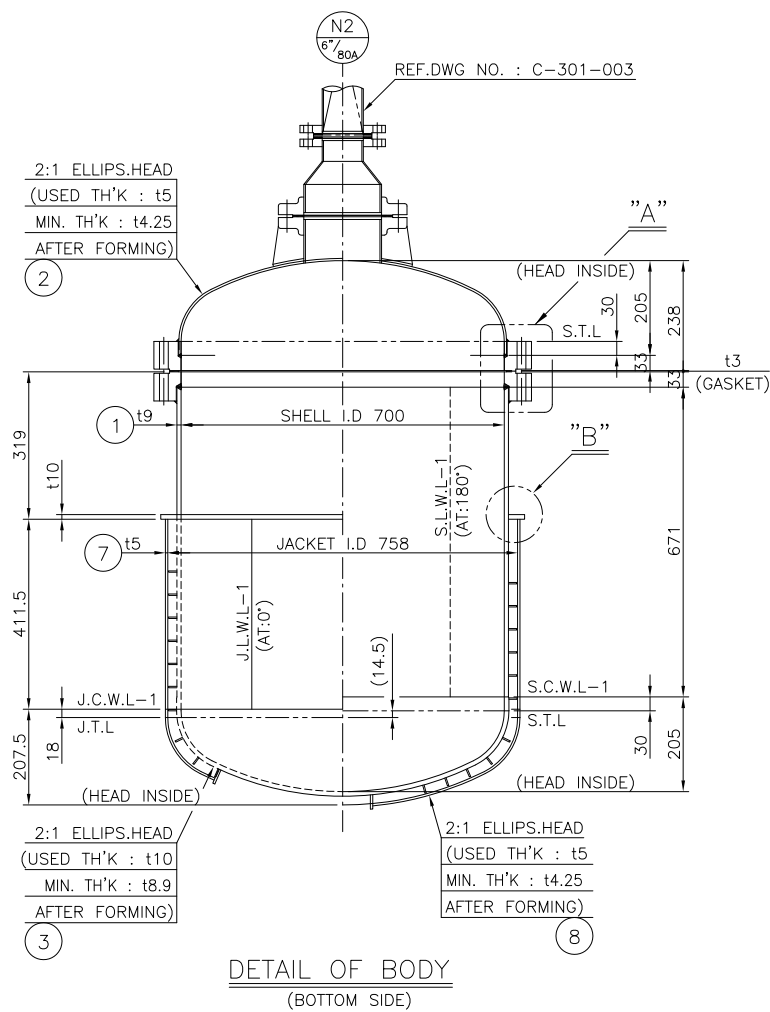
DETAIL OF "B"



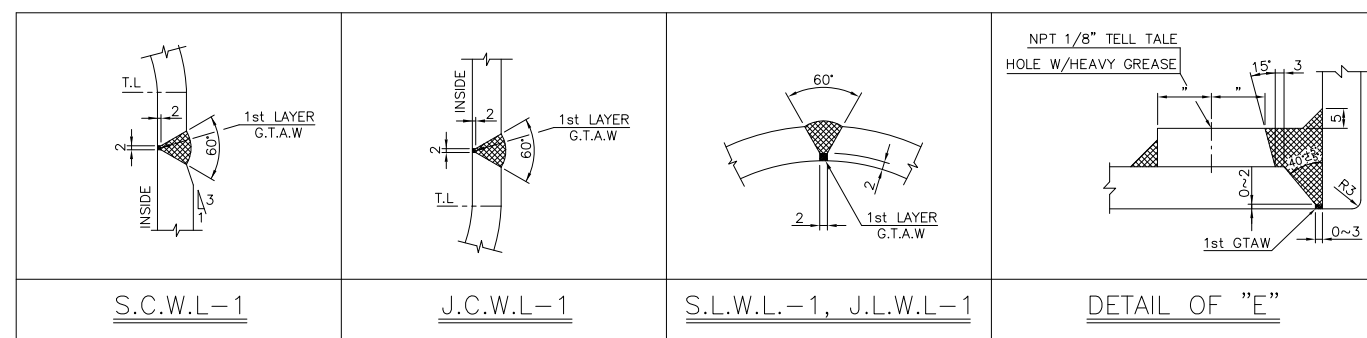
DETAIL OF "C"



SPIRAL BAFFLE DEVELOPMENT
(HEAD SIDE, BTM. VIEW)

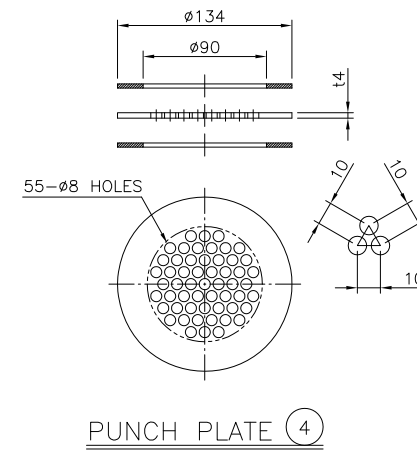
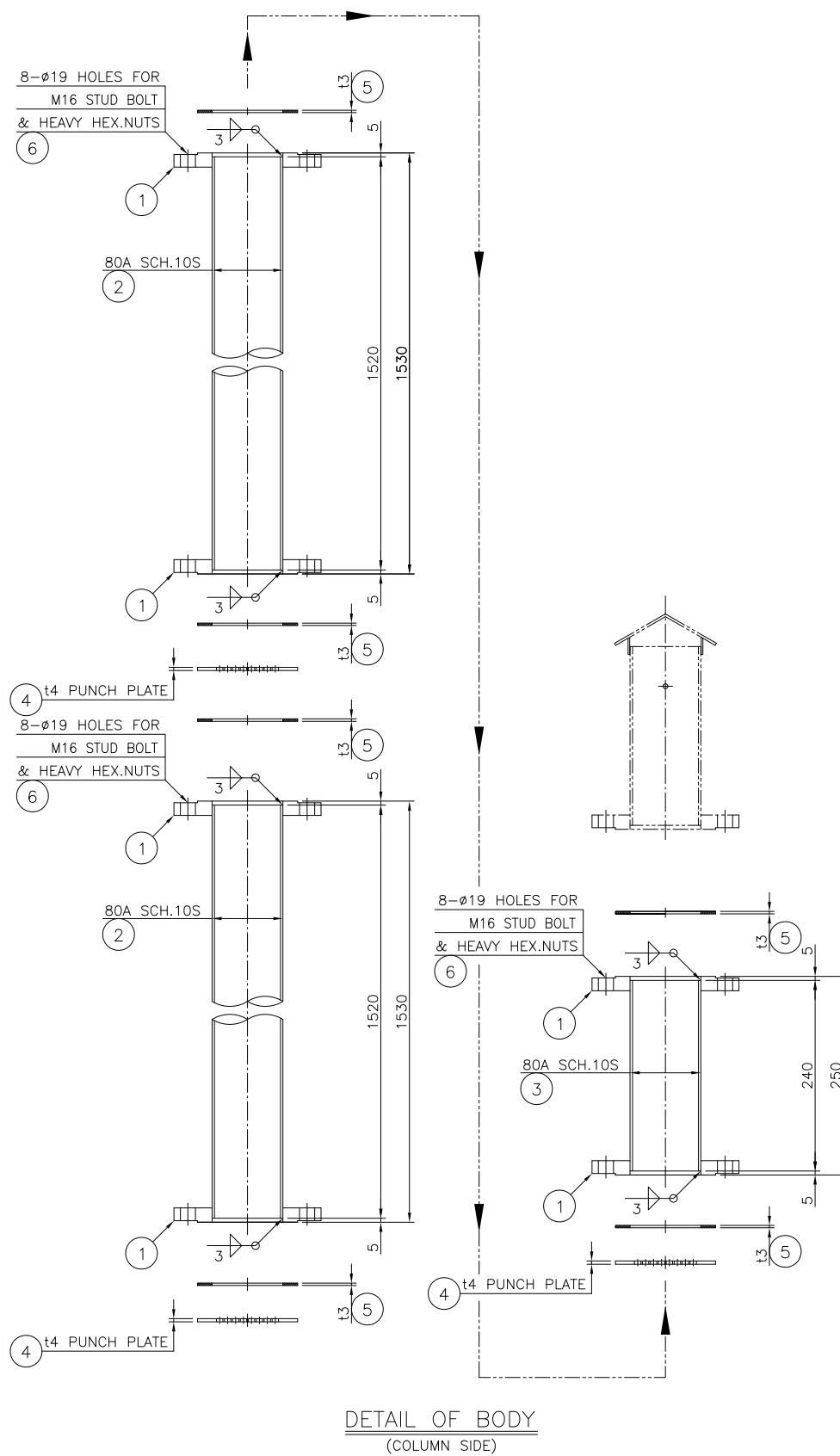
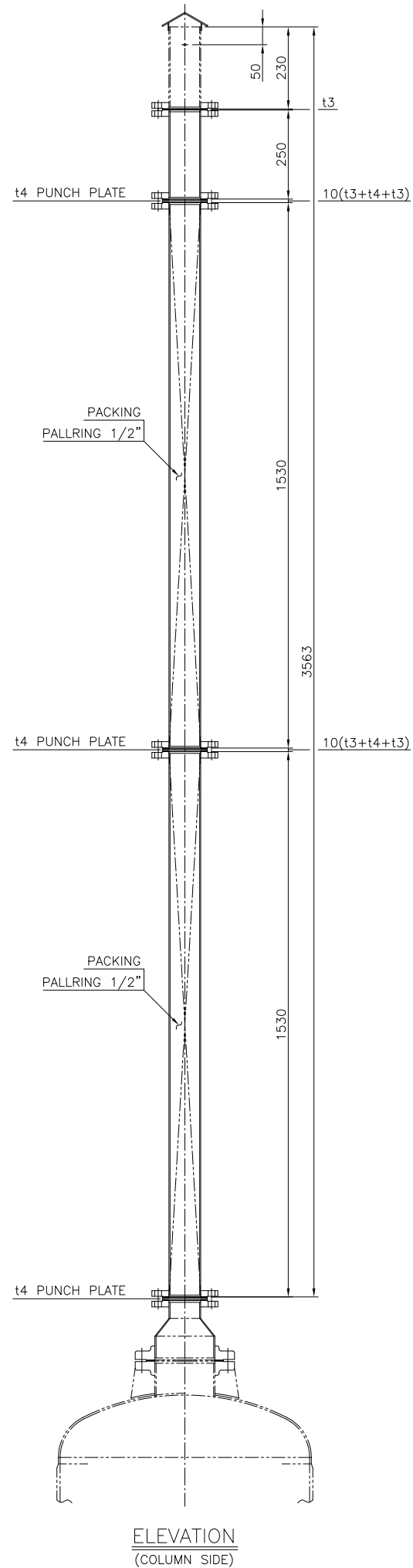


DETAIL OF BODY
(BOTTOM SIDE)



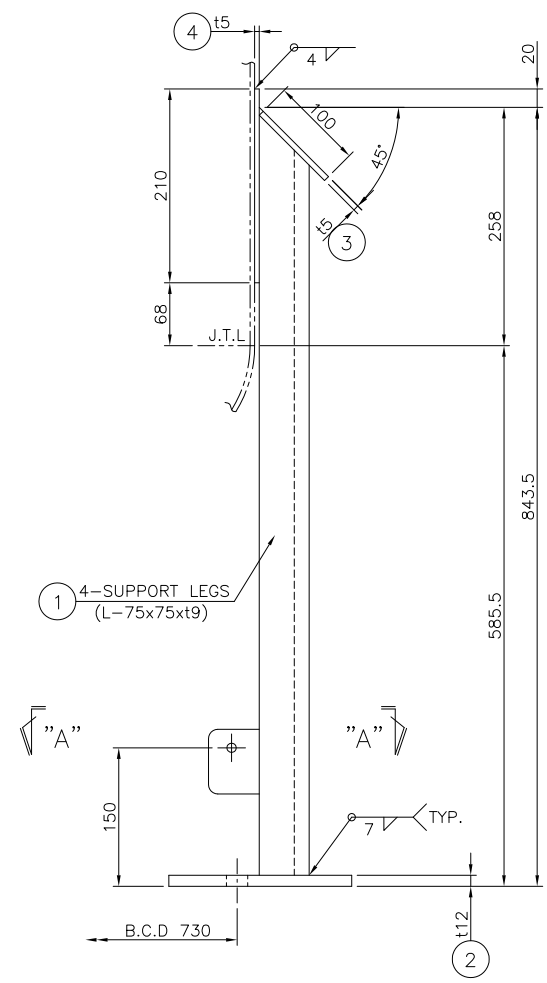
PART NO.	NAME OF PART	MATERIAL	Q'TY	SPARE	UNIT	REMARKS
23	JACKET CLOSURE	A240-304	1		EA	t5
22	STUD B/2-HEAVY HEX.NUTS	A193-B7/A194-2H	8	2	SETS	M16x80L
21	STUD B/2-HEAVY HEX.NUTS	A193-B7/A194-2H	8	2	SETS	U3/4-10UNCx120L
20	RIB PLATE	A240-316L	4		EA	t5
19	GASKET	PTFE	1		EA	t3
18	NOZZLE NECK	A312-TP316L	1		EA	80A SCH.10S
17	NOZZLE FLANGE	A182-F316L	1		EA	80A KS10K SO,RF
16	CONE	A240-316L	1		EA	t3
15	GASKET	PTFE	1		EA	t3
14	REINF.PAD	A240-316L	1		EA	t5
13	NOZZLE NECK	A312-TP316L	1		EA	6" SCH.10S
12	NOZZLE NECK	A312-TP316L	1		EA	6" SCH.10S
11	NOZZLE FLANGE	A182-F316L	2		EA	6" ASME150# SO,RF
10	SPIRAL BAFFLE	304 S.S	1		EA	F.B18x13
9	JACKET CLOSURE	A240-304	1		EA	t10
8	JACKET HEAD	A240-304	1		EA	t5 (2:1 ELLIPS.)
7	JACKET SHELL	A240-304	1		EA	t5
6	STUD B/2-HEAVY HEX.NUTS	A193-B7/A194-2H	24	3	SETS	M16x180L
5	GIRTH FLANGE	A182-F316L	1		EA	t63
4	GIRTH FLANGE	A182-F316L	1		EA	t63
3	BTM. HEAD	A240-316L	1		EA	t10 (2:1 ELLIPS.)
2	TOP HEAD	A240-316L	1		EA	t5 (2:1 ELLIPS.)
1	SHELL	A240-316L	1		EA	t9

(2) SETS TO BE MANUFACTURED

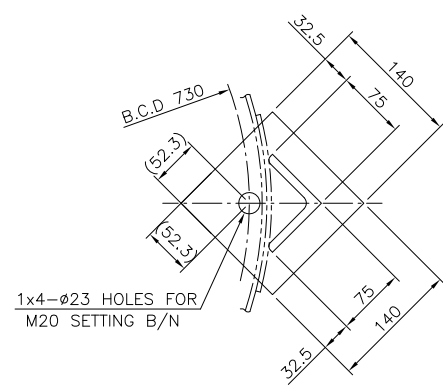
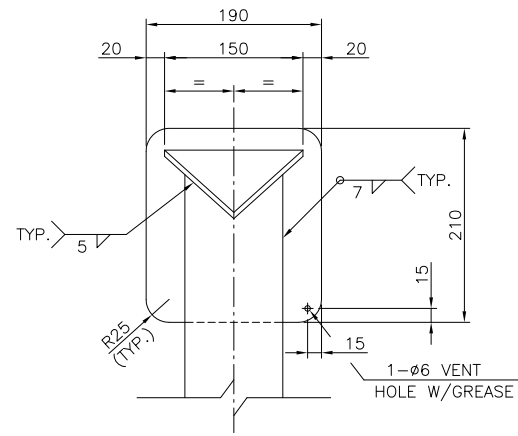


PART NO.	NAME OF PART	MATERIAL	Q'TY	SPARE	UNIT	REMARKS
6	STUD B/2-HEAVY HEX.NUTS	A193-B7/A194-2H	24	6	SETS	M16x90L
5	GASKET	PTFE	6	6	EA	t3
4	PUNCH PLATE	A240-316L	3		EA	t4
3	NOZZLE NECK	A312-TP316L	1		EA	80A SCH.10S
2	NOZZLE NECK	A312-TP316L	2		EA	80A SCH.10S
1	FLANGE	A182-F316L	6		EA	80A KS10K SO,RF
			Q'TY FOR 1 SET			

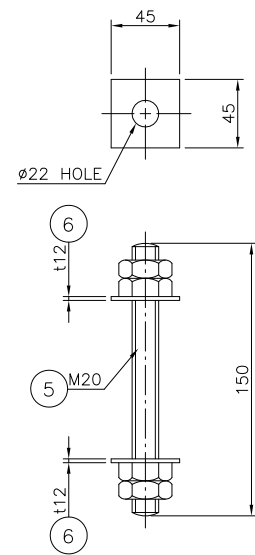
(2) SETS TO BE MANUFACTURED



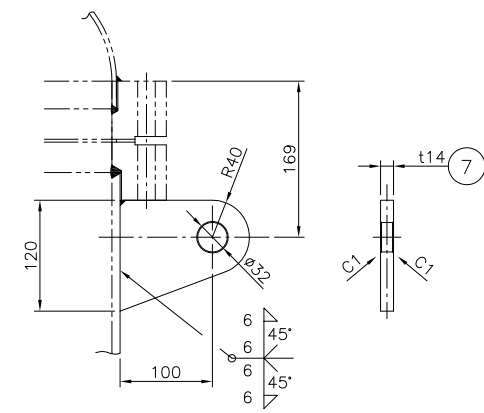
SUPPORT LEGS



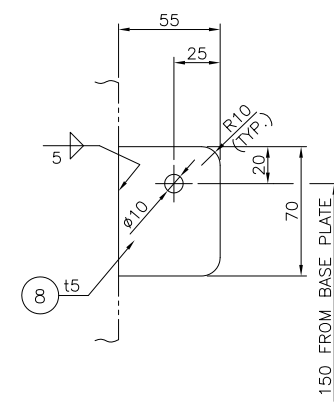
VIEW "A" - "A"



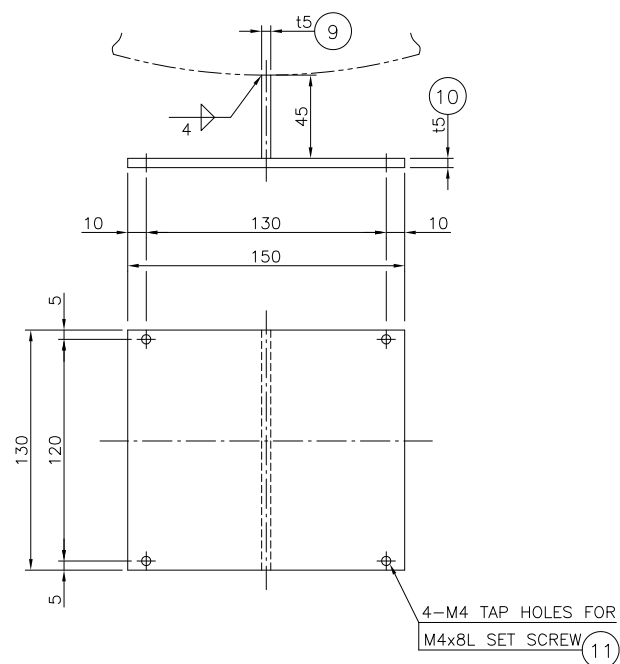
SETTING B/4NS/2W



LIFTING LUGS



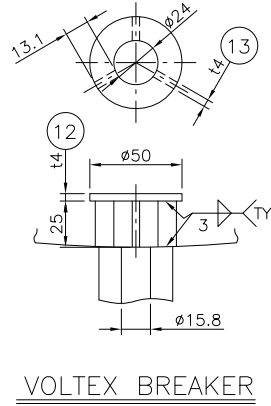
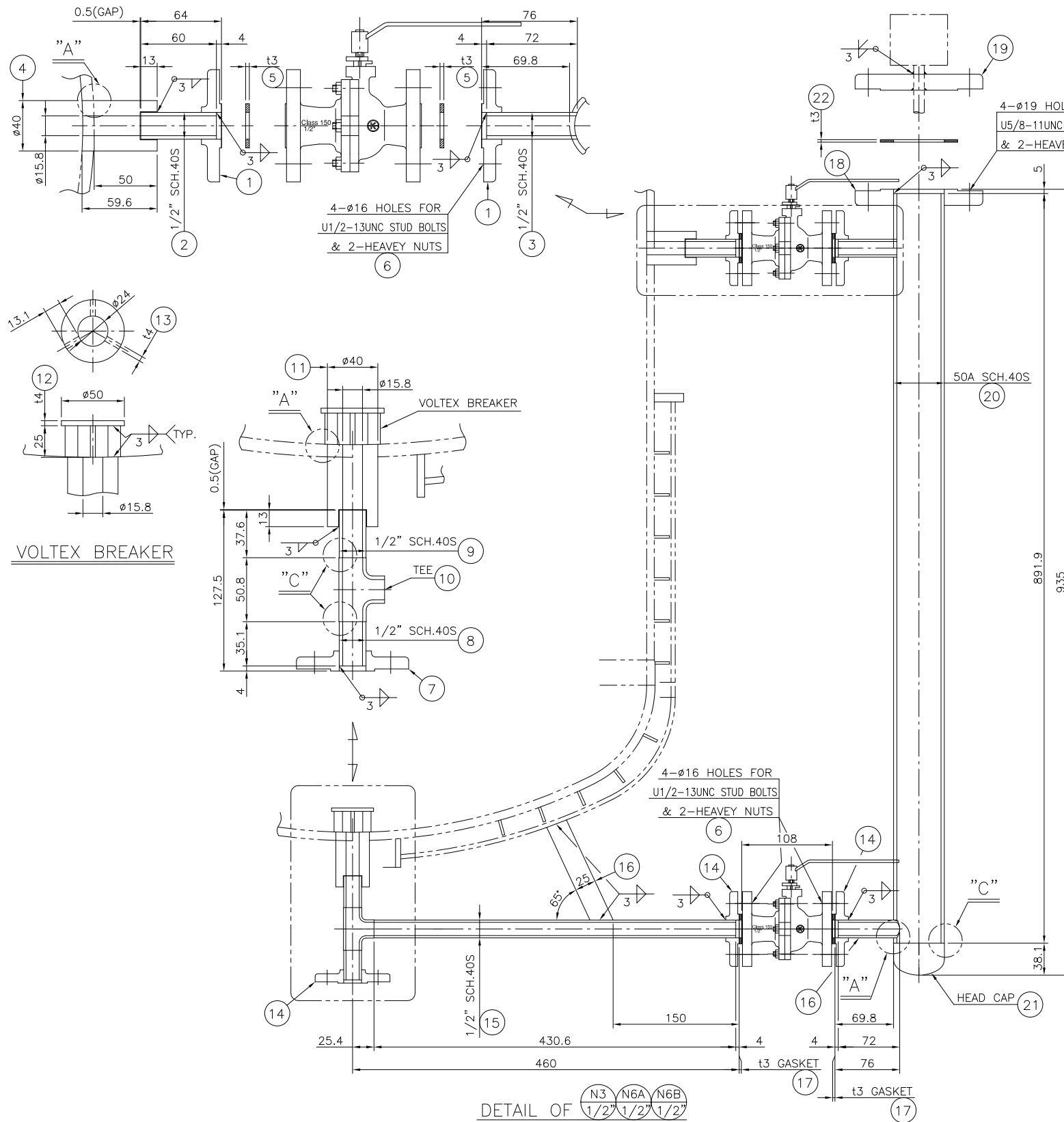
EARTH LUG



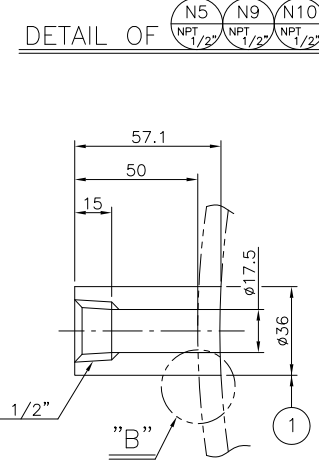
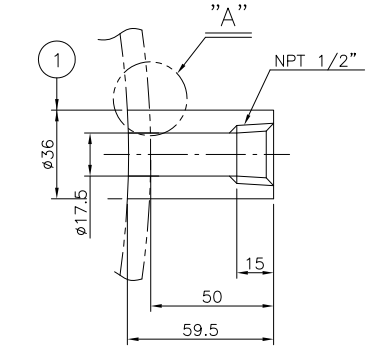
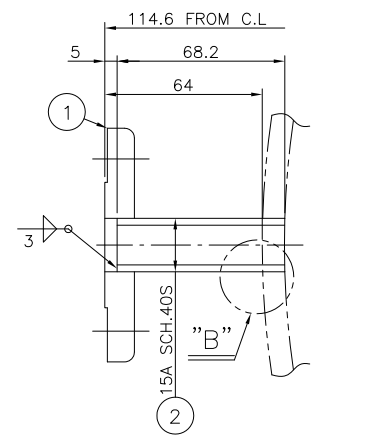
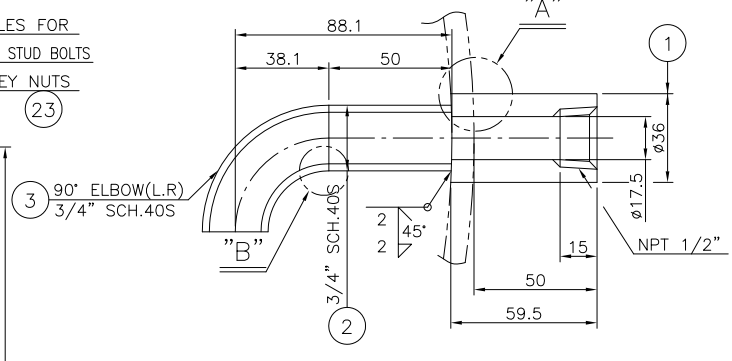
NAME PLATE BRACKET

11	SET SCREW	316L S.S	1		SETS	M4x8L
10	NAMEPLATE BRACKET	A240-316L	1		EA	t5
9	NAMEPLATE BRACKET	A240-316L	1		EA	t5
8	EARTH LUG	316L S.S	2		EA	t5
7	LIFTING LUGS	316L S.S	2		EA	t14
6	SQUARE WASHER	316L S.S	8		EA	t5
5	SETTING B/4N	316L S.S	4		SETS	M20x150L
4	REINF.PAD	A240-304	4		EA	t5
3	COVER PLATE	304 S.S	4		EA	t5
2	BASE PLATE	304 S.S	4		EA	t12
1	SUPPORT LEGS	304 S.S	4		EA	L-75x75xt9
PART NO.	NAME OF PART	MATERIAL	Q'TY	SPARE	UNIT	REMARKS
	PART CODE			Q'TY FOR 1 SET		

(2) SETS TO BE MANUFACTURED



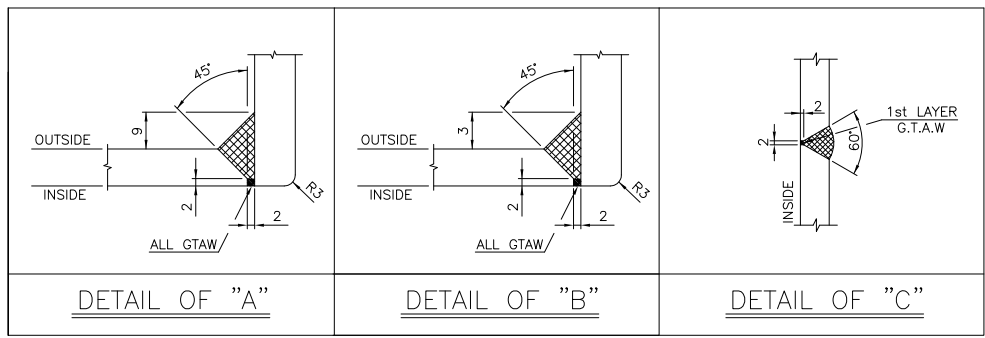
VOLTEX BREAKER

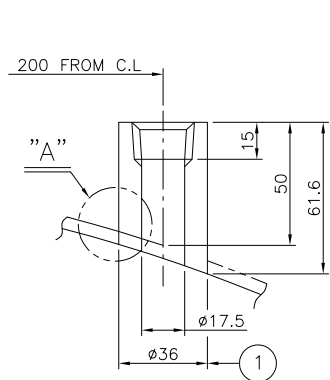


DETAIL OF N3, N6A, N6B
1/2", 1/2", 1/2"

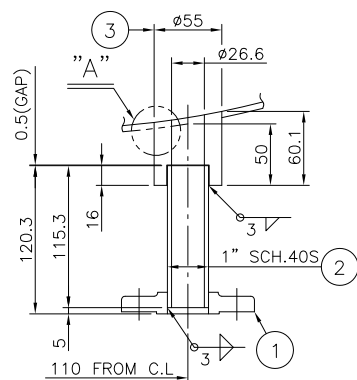
PART NO.	NAME OF PART	MATERIAL	Q'TY	SPARE Q'TY FOR 1 SET	UNIT	REMARKS
N8C						
N8B	2 NOZZLE NECK	A312-TP316L	3		EA	15A SCH.40S
N8A	1 FLANGE	A182-F316L	3		EA	15A KS 10K SO,RF
N7	1 COUPLING	A182-F316L	1		EA	36
N10						
N9						
N5	1 COUPLING	A182-F316L	3		EA	36
N6B						
N6A						
N3						
23	STUD B/2-HEAVEY HEX.NUTS	A193-B7/A194-2H	4		SETS	U5/8-11UNCx90L
22	GASKET	PTFE	1		EA	t3
21	HEAD CAP	A403-WP316L	1		EA	50A SCH.40S
20	NOZZLE NECK	A312-TP316L	1		EA	50A SCH.40S
19	FLANGE	A182-F316L	1		EA	50A KS 10K BL,RF
18	FLANGE	A182-F316L	1		EA	50A KS 10K SO,RF
17	GASKET	PTFE	2	2	EA	t3
16	NOZZLE NECK	A312-TP316L	1		EA	1/2" SCH.40S
15	NOZZLE NECK	A312-TP316L	1		EA	1/2" SCH.40S
14	FLANGE	A182-F316L	3		EA	1/2" ASME 150# SO,RF
13	VOLTEX BREAKER	A240-316L	3		EA	t4
12	VOLTEX BREAKER	A240-316L	1		EA	t4
11	COUPLING	A182-F316L	1		EA	40
10	TEE	A312-TP316L	1		EA	1/2"x1/2" SCH.40S
9	NOZZLE NECK	A312-TP316L	1		EA	1/2" SCH.40S
8	NOZZLE NECK	A312-TP316L	1		EA	1/2" SCH.40S
7	FLANGE	A182-F316L	1		EA	1/2" ASME 150# SO,RF
6	STUD B/2-HEAVEY HEX.NUTS	A193-B7/A194-2H	12	6	SETS	U1/2-13UNCx70L
5	GASKET	PTFE	2	2	EA	t3
4	COUPLING	A182-F316L	1		EA	40
3	NOZZLE NECK	A312-TP316L	1		EA	1/2" SCH.40S
2	NOZZLE NECK	A312-TP316L	1		EA	1/2" SCH.40S
1	FLANGE	A182-F316L	2		EA	1/2" ASME 150# SO,RF
N1						
3	90° ELBOW(L,R)	A403-WP316L	1		EA	3/4" SCH.40S
2	NOZZLE NECK	A312-TP316L	1		EA	3/4" SCH.40S
1	COUPLING	A182-F316L	1		EA	36

(2) SETS TO BE MANUFACTURED

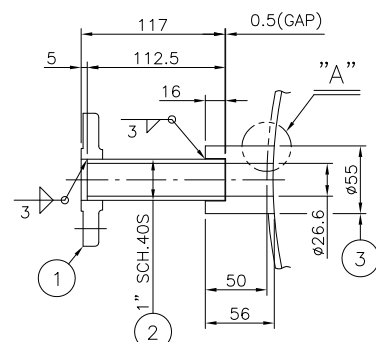




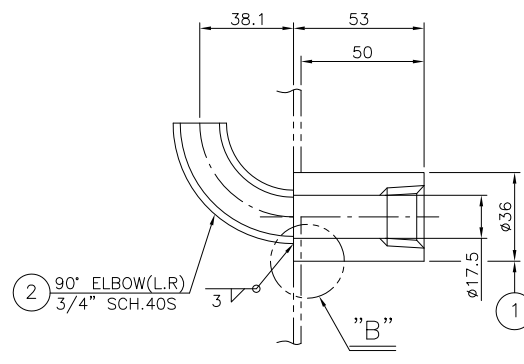
DETAIL OF $\begin{matrix} \text{N11} \\ \text{NPT} \\ 1/2" \end{matrix}$ $\begin{matrix} \text{N14} \\ \text{NPT} \\ 1/2" \end{matrix}$



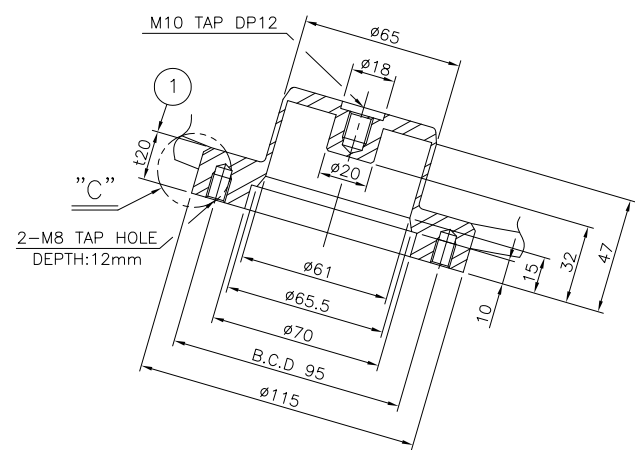
DETAIL OF $\begin{matrix} \text{N12} \\ 1" \end{matrix}$



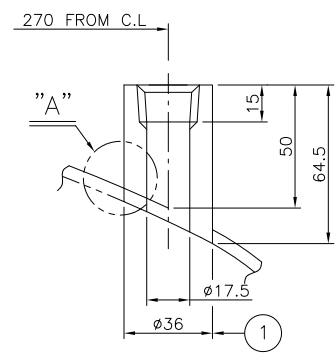
DETAIL OF $\begin{matrix} \text{N13} \\ 1" \end{matrix}$



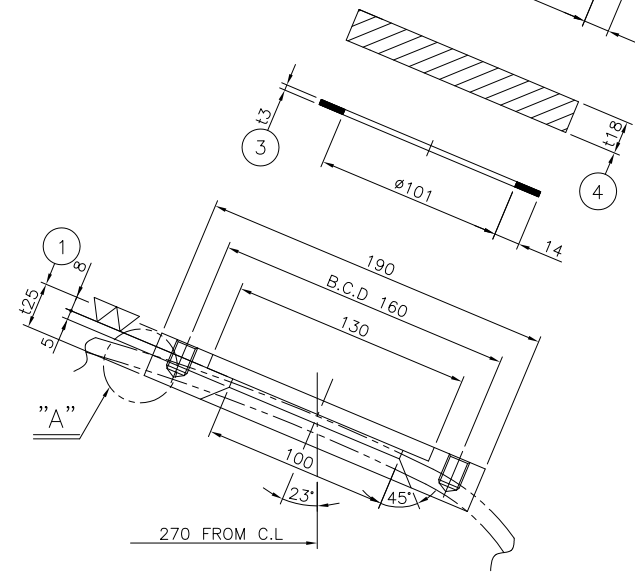
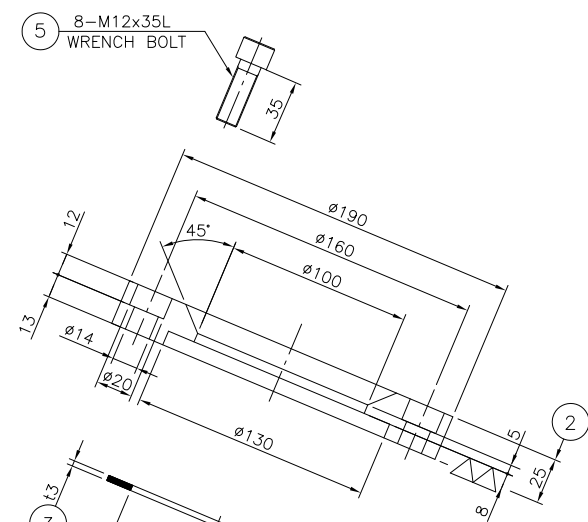
DETAIL OF $\begin{matrix} \text{N17} \\ \text{NPT} \\ 1/2" \end{matrix}$



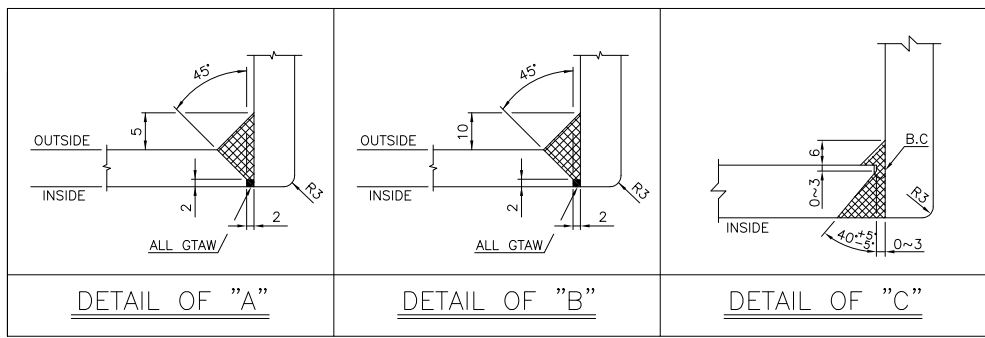
DETAIL OF $\begin{matrix} \text{N15} \\ \text{NPT} \\ 1/2" \end{matrix}$



DETAIL OF $\begin{matrix} \text{N16} \\ \text{NPT} \\ 1/2" \end{matrix}$



DETAIL OF $\begin{matrix} \text{LG} \\ \text{SG} \\ \text{N13} \\ \text{N17} \end{matrix}$



DETAIL OF "A"

DETAIL OF "B"

DETAIL OF "C"

PART NO.	NAME OF PART	MATERIAL	Q'TY	SPARE	UNIT	REMARKS
N17	2 90° ELBOW(L.R)	A403-WP316L	1		EA	3/4" SCH.40S
	1 COUPLING	A182-F316L	1		EA	ø36
SG	5 WRENCH BOLT	316L S.S	16		SETS	M12x35L
	4 GLASS	HARD GLASS	2		EA	t18
LG	3 GASKET	PTFE	4		EA	t4
	2 COVER FLANGE	A182-F316L	2		EA	t25
	1 PAD FLANGE	A182-F316L	2		EA	t25
N16	1 COUPLING	A182-F316L	1		EA	ø36
N15	1 SPECIAL	A479-F316L	1		EA	t20
N13	3 COUPLING	A182-F304	1		EA	ø55
	2 NOZZLE NECK	A312-TP304	1		EA	1" SCH.40S
	1 FLANGE	A182-F304	1		EA	1" ASME 150# SO,RF
N12	3 COUPLING	A182-F304	1		EA	ø55
	2 NOZZLE NECK	A312-TP304	1		EA	1" SCH.40S
	1 FLANGE	A182-F304	1		EA	1" ASME 150# SO,RF
N14	1 COUPLING	A182-F316L	2		EA	ø36

(2) SETS TO BE MANUFACTURED